



PRODESIO® HEAT SYSTEM

PRODESIO® HEAT SYSTEM



2015

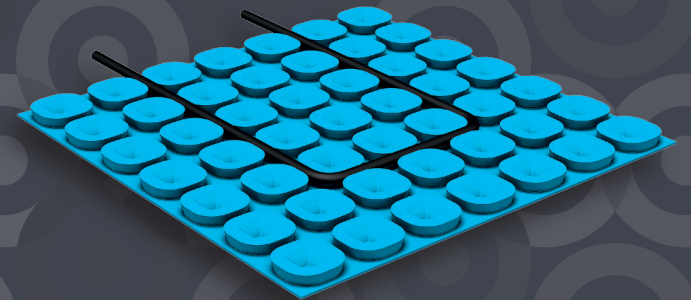
Filiale/Branch Office & Warehouse
Progress Profiles America Inc.
4, Middlebury Boulevard (Unit 14)
Randolph, New Jersey 07869
U.S.A

PROLINE RADIANT
Tel. 866 676 9276
Fax 801 948 7599

Sede /Headquarter
Progress Profiles SpA
Via Le Marze 7
31011 ASOLO (TV) Italy

Azienda certificata
UN EN ISO 9001:2008

Revolutionary patented system,
uncoupling, crack isolation
and waterproofing membrane,
for electrical floor heating



Revolutionary patented system, uncoupling, crack isolation and waterproofing membrane, for electrical floor heating

PRODESO® HEAT SYSTEM by Progress Profiles combines the benefit of an underlayment membrane with the comfort and convenience of electrical floor heating.

The **PRODESO® HEAT Membrane** can be installed over the entire subfloor as an uncoupling, crack isolating and waterproofing membrane.

The **PRODESO® HEAT Cable** is then installed in the areas where heat is required. Once the Heat Cable is installed you can begin tiling immediately, no waiting is necessary.

Install an underlayment membrane, the floor heat and tile all in the same day.

PRODESO® HEAT SYSTEM will add only 5.5mm to your overall installation. That's less than a 1/4 inch, which is considerably less than any previously used systems.

The patented **PRODESO® HEAT SYSTEM** by Progress Profiles allows you to have the comfort and convenience of under floor electrical radiant heating without the unnecessary added time and cost of previously used systems.

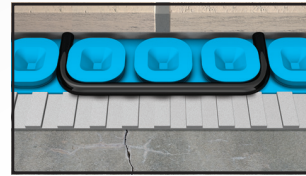
The innovative and Patented **PRODESO® HEAT SYSTEM** by Progress Profiles is a time saving, cost effective system to install a warm and comforting floor. The electric heating cable can be installed in the grooves of our patented membrane just where heat is desired and recommended.

PRODESO® HEAT SYSTEM thermostat allows you to program and control your floor heat cycles to optimize comfort and minimize operating costs. The pleasure of under floor heat where you want it, when you want it.

The **PRODESO® HEAT SYSTEM** is an easy to install and cost effective solution.

Progress Profiles **PRODESO® HEAT MEMBRANE** 10 Year Limited Warranty.

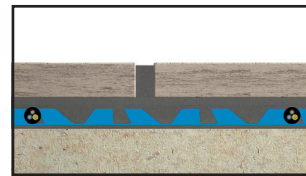
The advantages of a radiant heat floor system have long been known but the **PRODESO® HEAT SYSTEM** has game changing advantages



- Thanks to the uncoupling and crack isolating properties of the **PRODESO® HEAT MEMBRANE**, it's possible to install tile and floor heating over a variety of difficult substrates such as Plywood, Cement Slabs etc.

- Thanks to the uncoupling and crack isolating properties of **PRODESO® HEAT MEMBRANE**, it's possible to eliminate some of the otherwise necessary expansion joints in your installation.

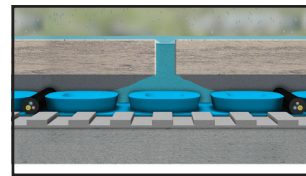
- With its low profile design, the height of the membrane is only 5,5 mm (1/4 inch) **PRODESO® HEAT MEMBRANE** is the perfect solution for remodeling projects where the new floor needs to transition over an existing surface.



- The low overall weight of the system makes it the perfect choice for applications where load bearing capacity of the subfloor is a limitation.

- Low thermal inertia. Tiles are installed directly on top of the heating cable. The heat will transfer rapidly and efficiently to the above tile for instant comfort and enjoyment.

- The benefit of choosing exactly where to install your heat areas will allow you to maximize your return on investment. Heat where you want it, when you want it, reducing the operating cost of the overall system while increasing the comfort and value of your home.



- Cost effective/time saving installation, coupled with the efficiency and safety of electric radiant heat make **PRODESO® HEAT SYSTEM** the obvious **PRODESO® HEAT SYSTEM** does not require any maintenance over time.

PRODESO® HEAT TEST PROCEDURE: ASTM C627: "Standard Test Method for Evaluating Ceramic Floor Tile Installation Systems Using the Robinson-Type Floor Tester"

Report Number	Substrate	Tile	Joist Spacing	Achieved Rating
TCNA-772-14	Concrete	12 x 12 Porcelain Tile	Not Applicable	Extra Heavy
TCNA-773-14	OSB/plywood	12 x 12 Porcelain Tile	19.2"	Extra Heavy

PRODESO® HEAT MEMBRANE

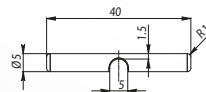
is a polypropylene uncoupling crack isolation waterproofing membrane, with rounded square shaped reliefs. These reliefs form a channel specially designed to embed and hold the Prodeso Heat Cable. Prodeso Heat Membrane unique design allows for:

- Flexible heating zone selection
- Cost and time saving installation
- Uncoupling crack isolation
- Vapor management
- Waterproofing
- Support load distribution
- Small height increase 5.5mm (1/4 inch)



PRODESO® HEAT MEMBRANE

Article	Description
PDESH 151/A	PRODESO HEAT uncoupling and waterproofing membrane 3' 3" X 49' 2 1/2" = 161.5 Ft² (1 m x 15 m = 15 m²)
PDESH 051/A	PRODESO HEAT uncoupling and waterproofing membrane 3' 3" X 16' 4 1/2" = 53.8 Ft² (1 m x 5 m = 5 m²)



PRODESO® HEAT CABLE CLIP

Article	Description
PCBLF	Plastic Clip to hold heating cable on Prodeso Heat Membrane (40mm 1.5/32")



PROLINE HEAT CABLE

is a UL listed heating cable designed to work in conjunction with Prodeso Heat Membrane. Do not exceed 15 watts/ft². View the ProLine heated floors data sheet for more specs and info.

HEAT CABLE - ProLine

Floor Heating Cable - 120V	Part #	Length (ft)	Approximate Heat Coverage (sq.ft.)		Amps	Watts (3W/ft)
			2.5" spacing	3.75" spacing		
	TC10120	38.9	8	12	1.0	120
	TC10240	77.8	16	24	2.0	240
	TC10360	116.7	24	36	3.0	360
	TC10480	155.6	32	48	4.0	480
	TC10600	194.5	41	61	5.0	600
	TC10720	233.5	49	73	6.0	720
	TC10840	272.4	57	85	7.0	840
	TC10960	311.3	65	97	8.0	960
	TC11210	391.7	82	122	10.1	1210
	TC11420	461.1	96	144	11.8	1420

Floor Heating Cable - 240V	Part #	Length (ft)	Approximate Heat Coverage (sq.ft.)		Amps	Watts (3W/ft)
			2.5" spacing	3.75" spacing		
	TC20120	38.9	8	12	0.5	120
	TC20240	77.8	16	24	1.0	240
	TC20360	116.7	24	36	1.5	360
	TC20480	155.6	32	48	2.0	480
	TC20600	194.5	41	61	2.5	600
	TC20720	233.5	49	73	3.0	720
	TC20840	272.4	57	85	3.5	840
	TC20960	311.3	65	97	4.0	960
	TC21080	350.2	73	109	4.5	1080
	TC21200	389.1	81	122	5.0	1200
	TC21440	466.9	97	146	6.0	1440
	TC21580	512.0	107	160	6.6	1580
	TC21780	580.1	121	181	7.5	1780
	TC21930	626.8	131	196	8.0	1930
	TC22090	678.4	141	212	8.7	2090
	TC22280	738.8	154	231	9.5	2280
	TC22420	783.3	163	245	10.1	2420
	TC22630	851.8	177	266	11.0	2630
	TC22740	887.2	185	277	11.4	2740
	TC22840	922.2	192	288	11.8	2840



PROLINE HEAT THERMOSTATS

feature digital floor thermostats with cable floor and / or ambient sensors. Call 866.676.9276 for specific details.

PRODESO® HEAT SYSTEM can be used as primary or secondary heat source in a variety of applications.

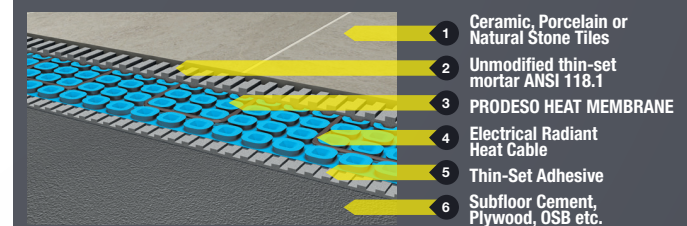
Commercial: Lobby / Reception / Conference Room / Office / Bathrooms / Restaurant / SPA / Pool Surroundings / Reception Hall.

Residential: Foyers / Kitchen / Bathroom / Shower / Living Room / Dining Room / Pools Surroundings / Basements / Home Theater / Man-Cave.

The applications are endless. Wherever heat and comfort are desired, **PRODESO® HEAT SYSTEM** is the solution.



LAYING'S SECTION OF PRODESO® HEAT SYSTEM



U.S. Patent No. 8,176,694

PROGRESS PROFILES & SYSTEMS

www.prolineradiant.com

