

Control Panel with GFEP

GENERAL PRODUCT INFORMATION

Contactors Panel with GFEP – Simplify your snowmelt installation with advanced contactors panels with built in 30mA ground fault protection of equipment per circuit (GFEP). These convenient panels help to reduce installation costs by eliminating extra wiring installation steps, and can be activated by an in-ground or aerial-mount sensor.

FEATURES INCLUDE:

- Low cost
- Easy to install
- NEMA 4, UL listed panel box
- Integrated 30mA GFEP (optional)
- Pre-wired terminal connections
- LED trip indicator (internal)
- LED ‘heat on’ indicator
- 120 V on/off remote heat indicator
- 2-year limited warranty



120 amp contactor panel with GFEP.

TECHNICAL DATA

Power Voltage Range:	208 V - 600 V
Maximum Heating Load:	120A / 240A
Control Voltage:	120 volt
Enclosure Type:	NEMA 4
Mounting:	Wall-mounted (indoor or outdoor)
Dimensions (H x W x D): 120 amp	14 x 12 x 6 (356mm x 305mm x 152mm)
240 amp	16 x 20 x 6 (406mm x 508mm x 152mm)
GFEP:	30mA trip

Contactors Panel (no GFEP) – The contactors panels are designed for snow and ice melting applications. All panels are pre-wired and UL listed complete with a NEMA 4 enclosure, wiring diagram, terminal connection block, and two or four 3-pole contactors. Timer panels can be used stand alone or in conjunction with an automatic controller. Contactors panels must be used in conjunction with an automatic controller.

FEATURES INCLUDE:

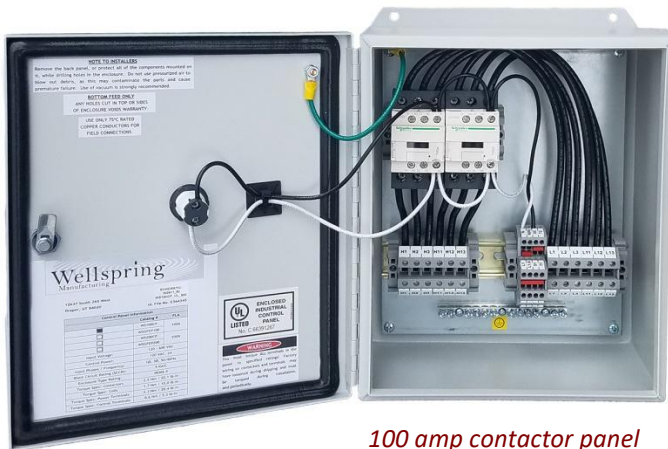
- Low cost
- Easy to install
- NEMA 4, UL listed panel box
- Heat on indicator light
- Pre-wired terminal connections
- 2-year limited warranty

TECHNICAL DATA

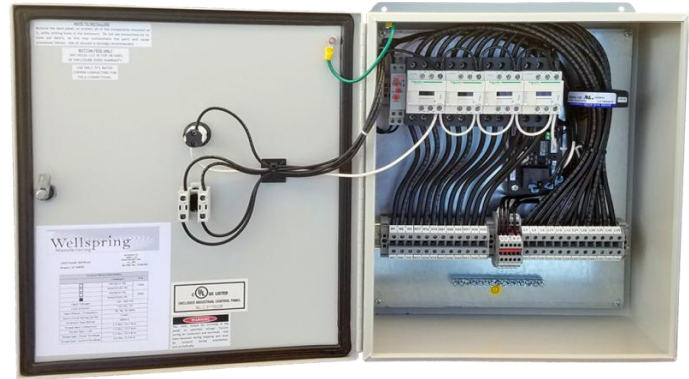


Power Voltage Range:	208 V - 600 V
Maximum Heating Load:	120A / 240A
Control Voltage:	120 volt
Enclosure Type:	NEMA 4
Mounting:	Wall-mounted (indoor or outdoor)
Dimensions (H x W x D):	
Without GFEP	14 x 12 x 6 (356mm x 305mm x 152mm)
With GFEP	16 x 14 x 6 (406mm x 356mm x 152mm)

Contactor Panels – Data Sheet



*100 amp contactor panel
without GFEP.*



*200 amp contactor panel
with GFEP.*

TECHNICAL DATA

Power Voltage Range:	208 V - 600 V
Maximum Heating Load:	120A / 240A
Control Voltage:	120 volt
Enclosure Type:	NEMA 4
Mounting:	Wall-mounted (indoor or outdoor)
Dimensions (H x W x D):	Dimensions (H x W x D):
100 amp (2 50-amp contactors)	16 x 14 x 6 (406mm x 356mm x 152mm)
120 amp (4 30-amp contactors)	16 x 20 x 6 (406mm x 508mm x 152mm)
200 amp (4 50-amp contactors)	20 x 20 x 6 (508mm x 508mm x 152mm)
240 amp (8 30-amp contactors)	14 x 12 x 6 (356mm x 305mm x 152mm)
GFEP:	30mA trip

Contactors Panels – Data Sheet

ORDERING INFORMATION

Contactors Panels



Contactors panel with timer



Contactors panel



240 amp Contactors panel with GFEP

Description	Max Amps	Coil Voltage	Number of Contactors
WS120CP	120		4
WS120CP with GFEP	120		4
WS240CP	240		8
WS240CP with GFEP	240		8
Single Contactors Panel Used to control power supply and heating cables (120 - 600 V)	50	120, 208-240	1
Dual Contactors Panel. Used to control power supply and heating cables (120 - 600 V)	100	120	2
Quad Contactors Panel. Used to control power supply and heating cables (120 - 600 V)	200	120	4
Dual Contactors Panel with GFEP. Used to control power supply and heating cables (120 - 600 V)	100	120	2
Quad Contactors Panel with GFEP. Used to control power supply and heating cables (120 - 600 V)	200	120	4

WARRANTY INFORMATION

Controls and Activation Devices: 2-year limited warranty.

Snow Melting Mats and Cable: 10-year limited warranty.

Snow melting heat cable is CSA approved for both the U.S. and Canada.



TECHNICAL SUPPORT

For technical questions, please contact ProLine at 866.676.WARM (9276) or via the web, www.prolineradiant.com.

ProLine accepts no responsibility for possible errors in catalogs, brochures, other printed materials, and website information. ProLine reserves the right to alter its products without notice. This also applies to products already on order provided that such alteration can be made without subsequent changes being necessary in specifications already agreed upon. All trademarks in this material are property of the respective companies. All rights reserved.